

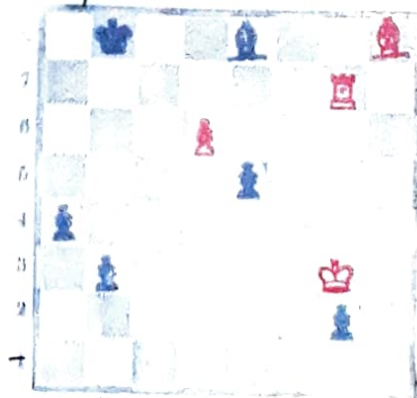
Laisaari Mauno Kalervo

Synt. 1910 20/III Oulussa.

Varatuomari, kotip. Helsinki

I luokan pelaaja, Viipurin shakkiklubin jäsen, samoin Helsingin yleisen shakkiseuran, Suomen Shakkiliiton sihteeri.

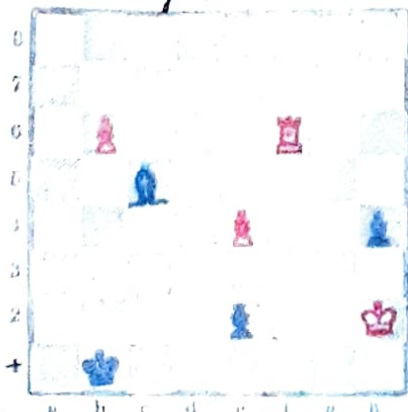
1) I palk. "S. Shakkiliitto" 1932.



Tasapeli.

1) Kh4-b2, 2) d7-L:d7 3) Txg2-b1D 4) T62+-Dx62 5) Lxes+-Dxes patti.

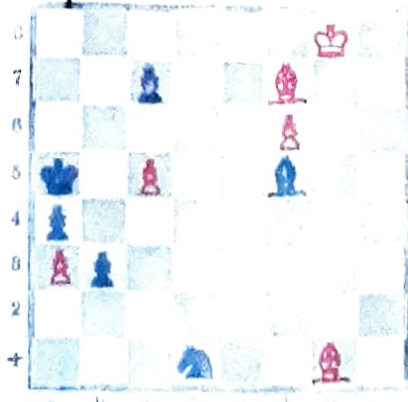
2) "Helsingin Sanomat" 1932.



Tasapeli.

Ratk. 67-La7 2) es-R1D3/Tf1-Dx1 4) 68D-Lx68 patti.
- - 3) h3. 4) Tg6-R1D 5) 68D-Lx68
6) Tg1-Lxes 7) Kh1

3) I palk. "S. Shakkiliitto" 1933.



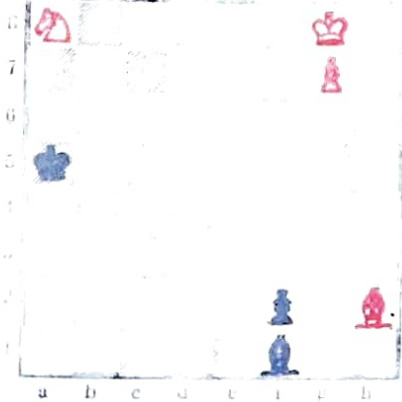
Valhea voittoa

Ratk. 1) f4-b2, Lx62-Rx62, Ld5-Lg6, Kg7-Lg8, Lc6-Lh5, f3-Lg8, Le2-c6, Kf8-Lg6
Kf2 ja voittoa.

ESIKOLETEHTÄVÄ

4)

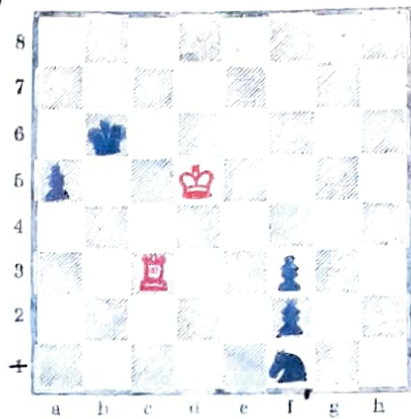
"Karjala" 1932.



Tasapeli.

Ratk. Rb6-Rx66, Kh8-Lc4,
g8D-Lxg8, Lg1-fg1D patti.

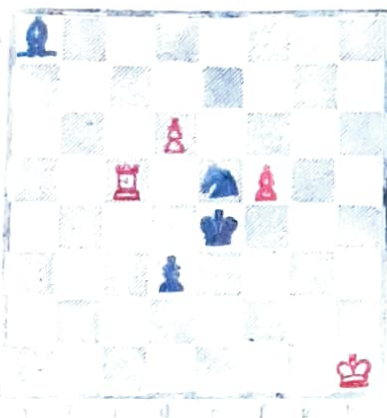
5)



Tasapeli.

Ratk. Tg3+-Ka6, Tf3-Re3+-
Kc5-f1D, Tf6+-Df6 patti.

6)



Asumatti: 4 #

Ratk. d7-Rf3, d8L-Kd4,
Lh4-Lc4, Lf2 #

