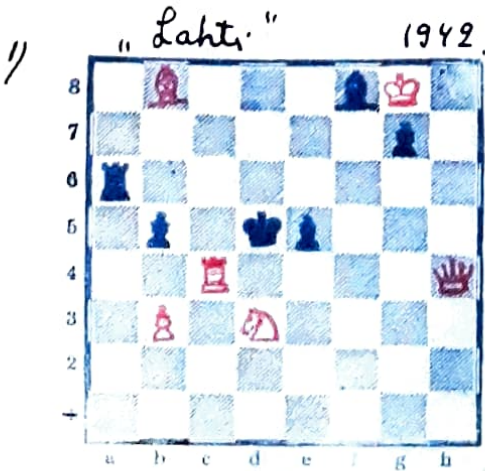


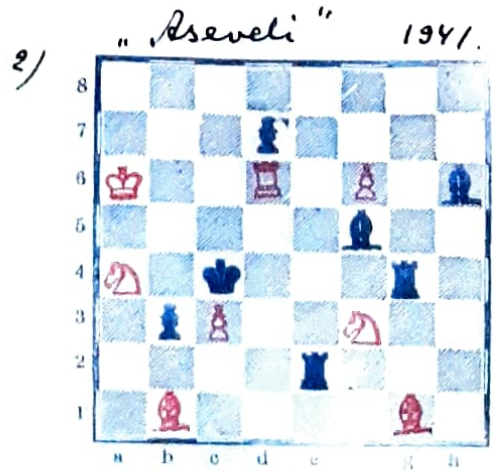
# Laaksonen, Kaarlo

Synt. 1899 18/10 Hongonjoella.  
 Väpäeli, kotipaikka Sulhava  
 Suomen Tehtävämiekkain jäsen.



2 #

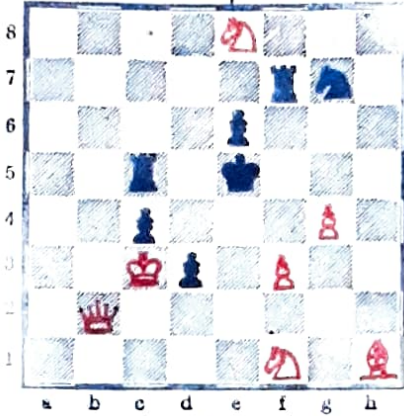
Ratk. 1/ D4 uhkaa D25 #  
 2/- Ld6, Df7 # 3/- Td6, D24 #  
 jne



2 #

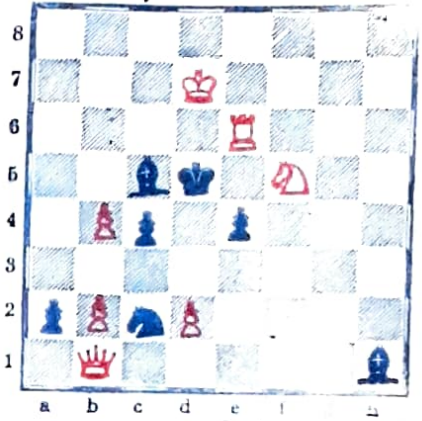
Ratk. 1/ Le3 uhkaa Re5 #  
 2/- H4, Td4 # 3/- L2, La2 #  
 jne

3) "Suomen Aikupseeri" 1936.



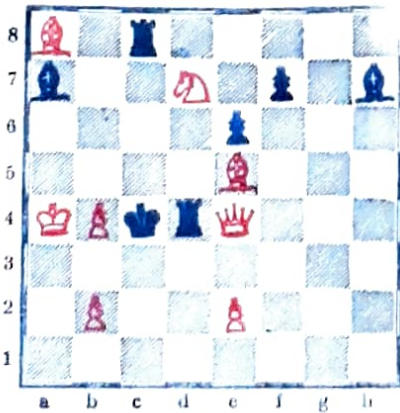
2 #  
Ratk. Df2 uhkaa Dd4 #  
2/- Kd5, f4 # jne.

4) "Helsingin Sanomat" 1942.



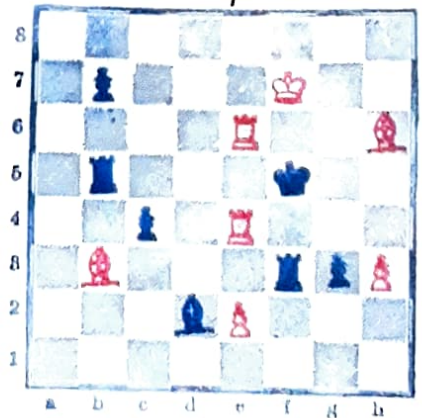
2 #  
Ratk. 1/d4 uhkaa Te5 #  
2/- Rxd4, Re3 # jne  
Pape - Teema,

5) "Uusi Suomi" 1939.



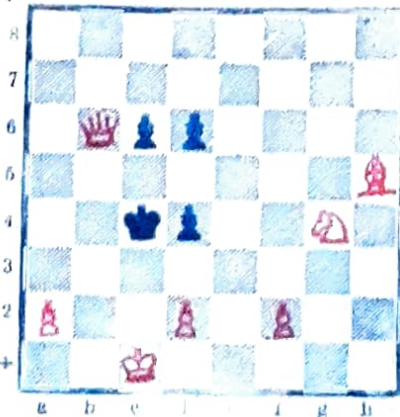
2 #  
Ratk. 1/f6 uhkaa Re5 #  
2/- Tc5, Dxd4 # jne

6) "Suomen Aikupseeri" 1941.



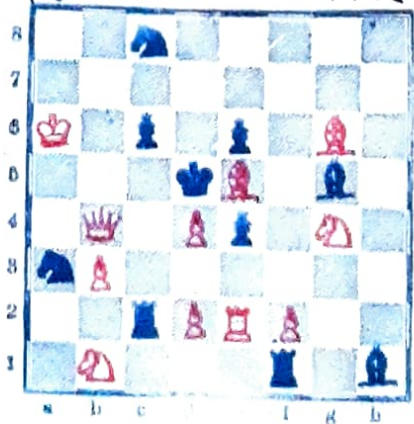
2 #  
Ratk. 1/Tg4 uhkaa e4 #  
2/- Te3, Tf4 # 3/- Le3, Le2 #  
jne.

7) "Åbo Undersättelser" 1943.



2 #  
Ratk. 1/f3- Kd3, Da6 #  
2/- Kd5, f7 # 3/- d3, Re3 #  
4/- d5, Re5 # 5/- c5, Dg3 #  
Ferreau - Teema.

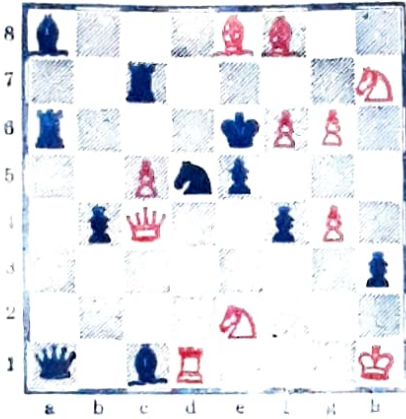
8) "Aseveli" 1942.



2 #  
Ratk. 1/f4 uhkaa Re3 #  
2/f7+3- Le4 # 3/- Re4, Dc5 #  
4/- c5, Dd7 # jne Pape - Teema

# Kaarlo Laaksonen.

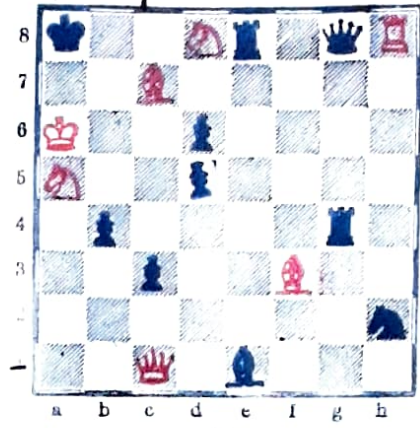
9) "Abo Underrättelser" 1943.



2 #

- Ratk. 1) Dc4 uhkaa Df5 #  
 2) - Rb6, Td6 # 3) - Rc3, Rd4 #  
 4) - Re3, Rf4 # 5) - Rf6, Rg5 #  
 6) - Re7, Lf7 #

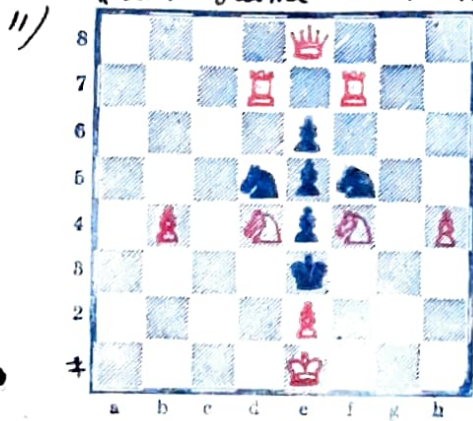
10) "Marjala" 1938.



4 #

- Ratk. Dc3 - Txr3, Rc4 - Txr4,  
 Lxd5 - Dxd5, Re6 #

Juhannuskoivu  
 "Uusi Suomi" 1934.



2 #

- Ratk. Dc7 - Rdxr7, Rg2 #  
 2) - Rfxr7, Rc2 # 3) - Rd4, Dc5 #  
 4) - Lf4, Dg5 #

