

# Kujala, Reino

Synt. 1900 8/8 Tampereella.

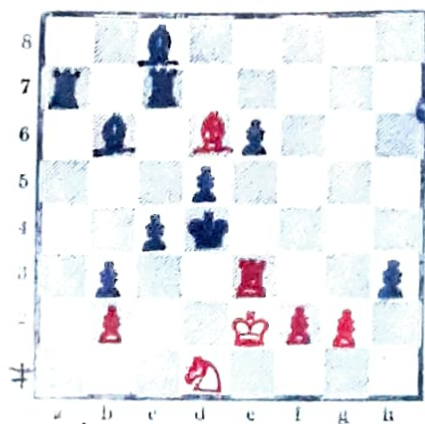
Buuvillatehtaan työntekijä. Kotip. Tampere.  
Tampereen työväen shakkikerhon perustaja-  
jäsen 1935.

Tampereen shakkiklubin jäsen 1942 - .

Suomen Tehtävämiekkain  
jäsen 1943. Työväen shak-  
kiluton sihteeri 1939 - .



1) „Aamulehti” 1940.



3 #

Ratk. 1) Re3 uhkaa Rb5 #

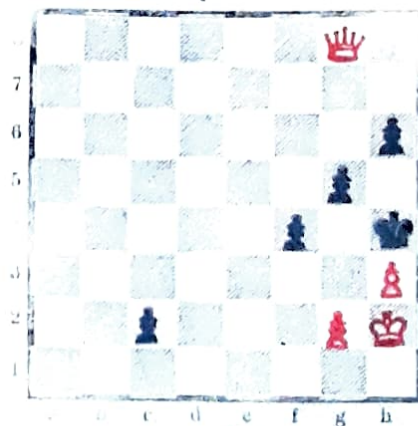
1) - La7, Kd3 ja Re2 #

2) - La6, Kd1 ja Re2 #

3) - Ta5, Kd2 ja Re2 #

2) V palk. „Rjan Panan” Teematurun.

2/



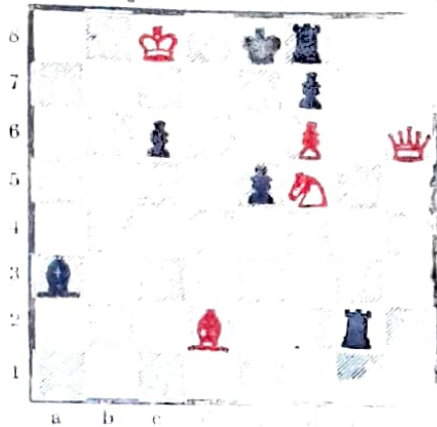
1932.

3 #

Ratk. Dg6-h5, Dd4-g4  
Dd7 #

Omisattelur Pentti Solalle.  
"Ajian Sana" 1932.

3/

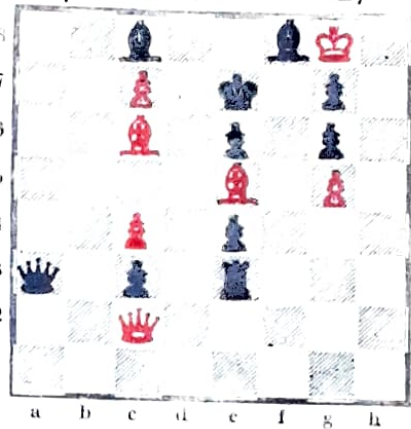


3 #

Ratk. Lb4 - Lxb4, Dd2 - Lxd2,  
Rd6 # jos Txd2 niin Rg7 #  
Novotny

"Aseveli" 1942.

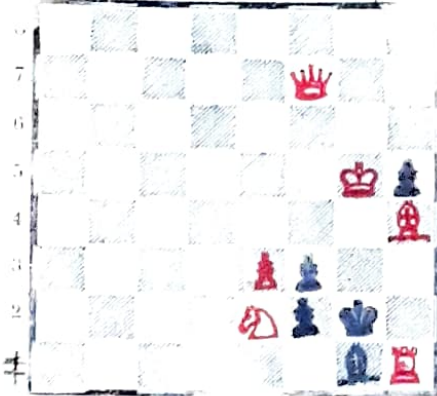
4/



3 #

Ratk. c5 uhkaa Ld6 #  
1) - Dxc5, Df2 - Txf3, Dxc5 #  
2) - Ld7, Ld6+ Kc8, c8D #

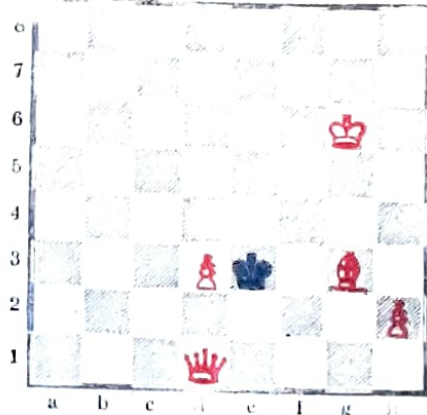
5) "Suomen Sosialidemokraatti" 1942



3 #

Ratk. Dd7 uhkaa Dh3 #  
1) - Kxh1, Dh3+ - Lh2, Dxf3 #  
2) - Lh2, Dh3+ - Kxh3, Rf4 #  
3) - Kf1, Rf4+ - Kc1, Tg2 #

6) "Samulihti" 1931.

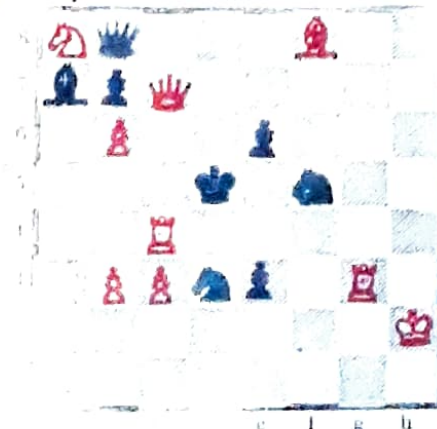


3 #

Ratk. 1) Dc2 - Rd4, Lf4 - Rd5,  
Dc4 # 2) - Kf3, Df2+ - Kg4, Df5 #

"Aseveli" 1942.

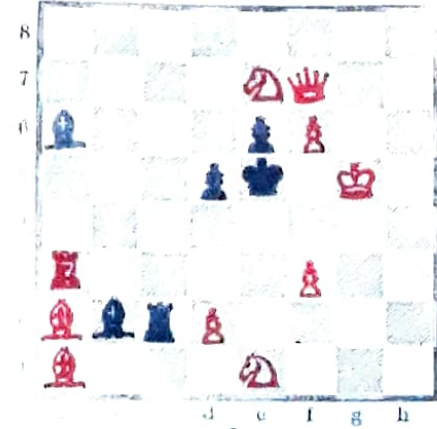
7/



2 #

Ratk. 1) Tg5 uhkaa Td4 #  
2) - Re5, Dc5 # 3) - e5, Df7 #  
4) - Dxc7 Tai Lxb6, Rxc7 Tai Rb6 #  
Rupp-Teema.

8) "Suomen Sosialidemokraatti" 1933.



2 #

Ratk. 1) Rf5 uhkaa Td3 #  
2) - Lc3, Dc7 # 3) - Ld4, Ld4 #  
4) - Ld3, Rd3 # 5) - Te3, d4 #  
6) - d4, Dc6 # 7) - e5, Dd5 #