

Iso-Puonti Yrjö Isten

Synt. 1893 2¹/₂ Vaasassa.

Floriolik. auskultantti, maistraatin sihtteri Turussa.

Ensi luokan shakinpelaaja.

Turun shakkiklubin jäsen.

Suomen Tehtävämiekkain perustajajäsen 1935.

V. 1937 saanut "Kansallisen tehtävämestarin"

arvon. SIT:n hallituksen varajäsen usei-

na vuosina. Toimittanut "Uuden Auran" ja

"Abo Under-

tidsningens"

"Suomen Shakin"

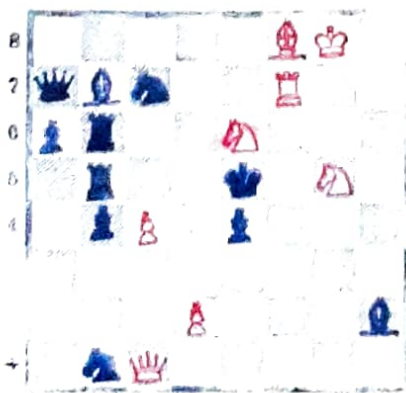
nättersers Schack-

shakkipalstoja

toimittaja 1927.

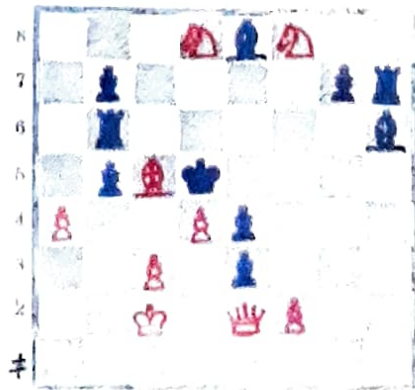


1) "Abo Underrättelser" 1930.



2#
Ratk. Dc1.

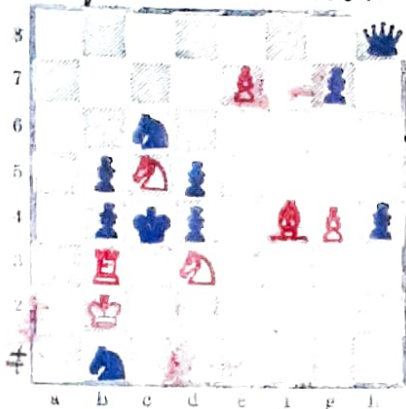
2) Kunniamain. "Sjan Sana" 1931.



3#
Ratk. Rf6 - uhkoa Rc7#
1) - g6, Kc1 jne 2) - g5, Kc1 jne
3) - Txc6, Kc1 jne 4) - Tc6, Dxb5 jne

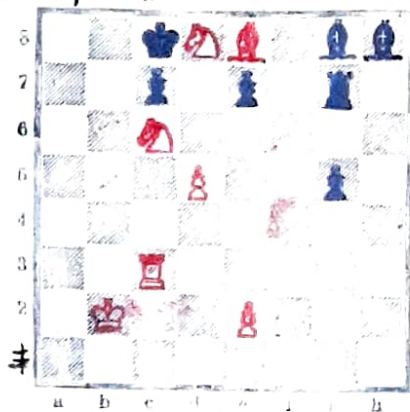
Y. S. Iso-Buonti

3) "Ajan Sana" 1931.



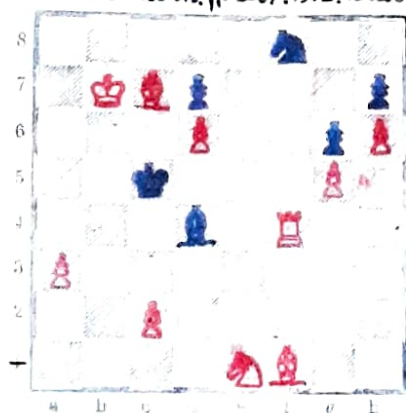
3#
 Ratk. 1) d6 uhkaa Tx b4 jne
 2) - Dh5, fca1 jne 3) - g6, Kxb1 jne
 4) - g5, Kc1 jne

4) "Ilpata... S. Shakkiliitto" 1933.



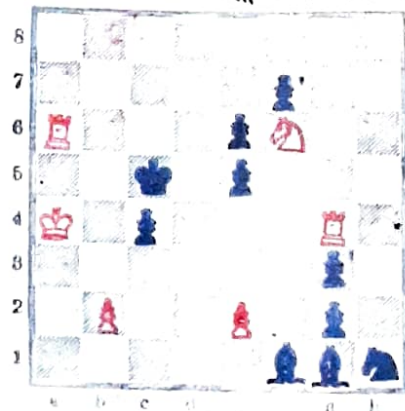
3#
 Ratk. 1) Ta3 - Th7, Kc2 jne
 2) - Tg6, Kc1 jne 3) - Tt7, Kc2 jne

5) "Kunniamain... Hels. sh. klubi" 1926.



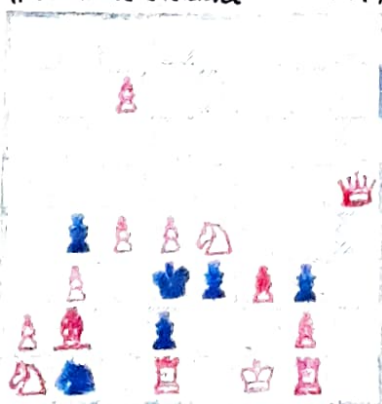
3#
 Ratk. 1) La6 - Kd5, Rd3 jne
 2) - Lta R00, Rd3f jne

6) "Kunniamain... S. Shakkiliitto" 1934.



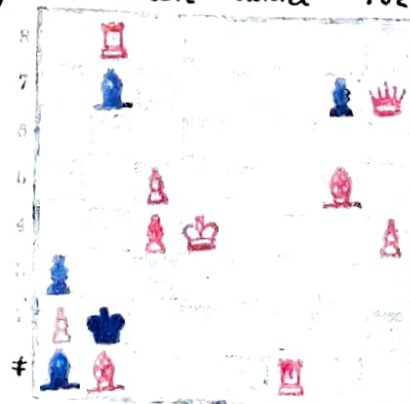
3#
 Ratk. 1/23

7) "Suomen Shakki" 1927.



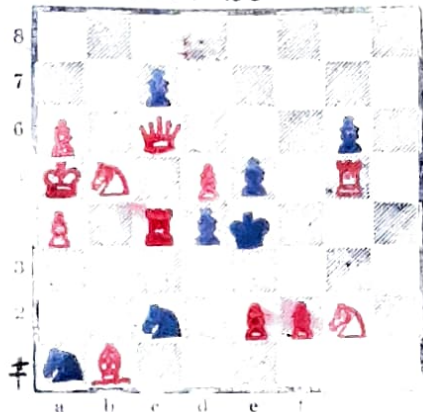
Teemati: 3#
 Ratk. 1) Da5 - Rc3, Rc5+ - Kxd4
 f4 - e2# 2) - Ra3, Dxa3 - bxa3,
 Lc3 - e2#

8) "Suomen Shakki" 1926.



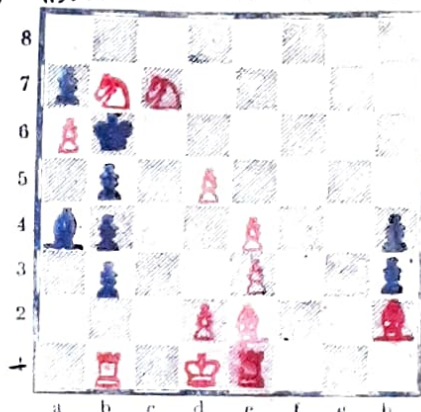
Teemati: 4#
 Ratk. De4 - g6, Tf5 - gxf5,
 f4 - fxg4, Le3 - Kxb1#

9) "Suomen Shakti" 1928



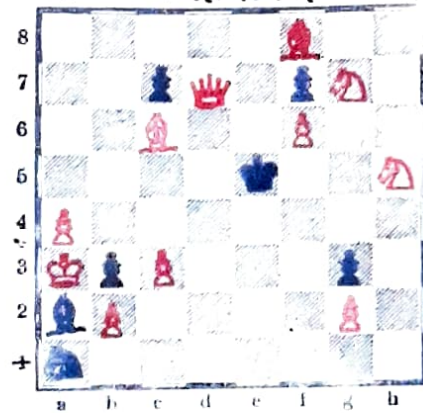
Teematti: 4 #
 Rauh. f4 - e4, Lxc2 - Rxc2,
 Txd4 - Rxd4, d6+ - Rxc6 #
 Vaihdelma: Rb3 #

10) "Åbo Underrättelser" 1928.



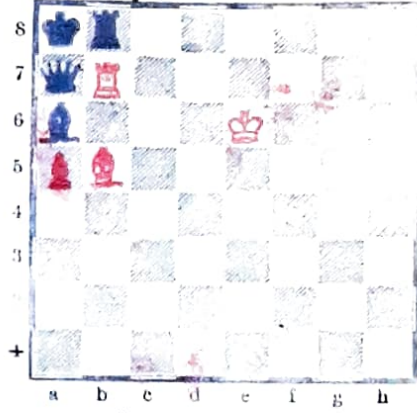
Teematti: 2 #
 Rauh. 1) Rc5 - Rxc5, Ra8 - b2 #
 2) - Ra5, Rd7 - b2 # 3) - b2+ - Rb3 -
 Lxb3 # Vaihdelma: b2 #

11) "Åbo Underrättelser" 1927.



Teematti: 6 #
 Rauh. Dg4 - Lb1, Dg5+ - Lf5,
 De3+ - Le4, Dc5+ - Ld5, De7+ -
 Le6, De8 - Rc2 #

12) "Rjan Sana" 1932



Apumatti: 2 #
 Rauh. D66+ - ab, Lx65 - Ta7 #
 Vaihdelma: - Rd7, Kb7 - Lc6 #

