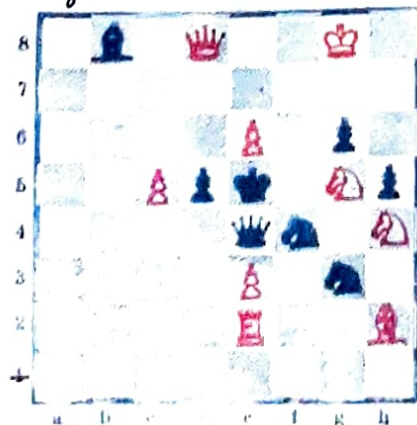


Höglund Harry

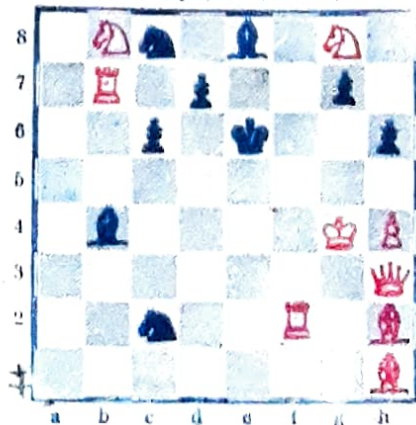
1/ "Työväen Shakti" 1934.



2 #

Ra1h, 1Kh7 uhkaa Dh8 # 2) -
Rf5, Rg6 # 3) - Re6, Rf7 # jne

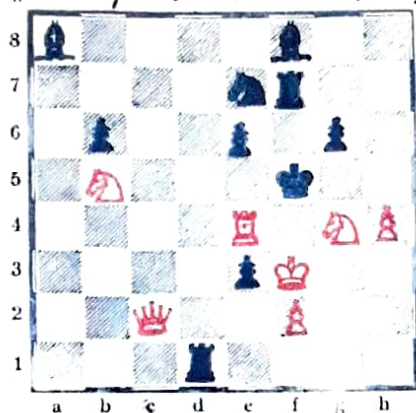
2/ Hls.nhakkiklubin turn. 1936.



2 #

Ra1h. 1/Ra6 uhkaa Rc7 # 2) - d6,
1f4 # 3) - d5, 1f3 # 4) - Ld6, Dc3 #
jne

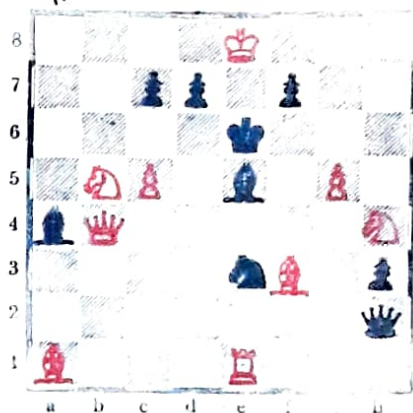
3) "Helsingin Sanomat" 1935.



2 #

Ratk. 1) Dc4 uhkaa D x e6 # 2) -
- Td5, Tf4 # 3) - Rd5, Te5 # 4) - Ld5,
Rd6 # jne

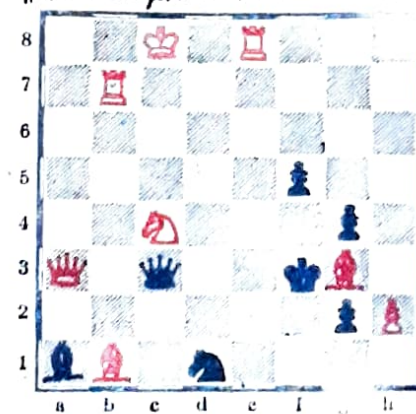
4) "Uusi Suomi" 1935.



2 #

Ratk. 1) c6 uhkaa D e7 #
2) - Ld6, Dc4 # 3) - Lf6, Dg4 #
4) - Rd5, Rd4 # jne Grimshaw

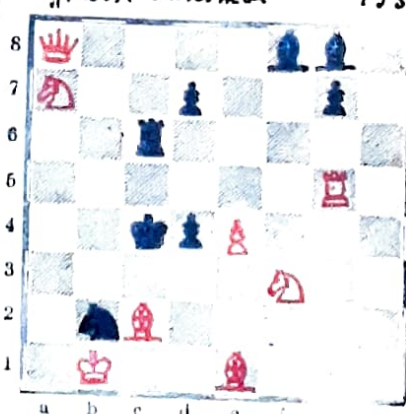
5) "Helsingin Sanomat" 1934.



2 #

Ratk. 1) T b2 uhkaa D a8 #
2) - Dd3, Rd2 # 3) - De3, Re5 #
4) - Da3, Rd2 # 5) - Re3, Tf2 #
Jaana

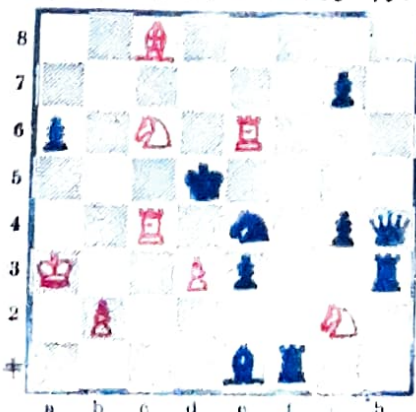
6) "Hels. Sanomat" 1933.



2 #

Ratk. 1) T b5 uhkaa Re5 #
2) - Te5, Td4 # 3) - Te6, Dd5 #
4) - Ld6, Dg8 # jne

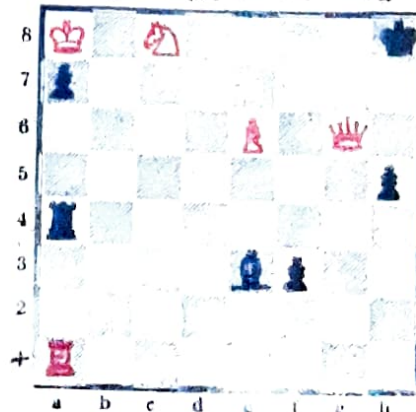
7) "Åbo Underrättelser" 1936.



2 #

Ratk. b3 - Retrupyrä.

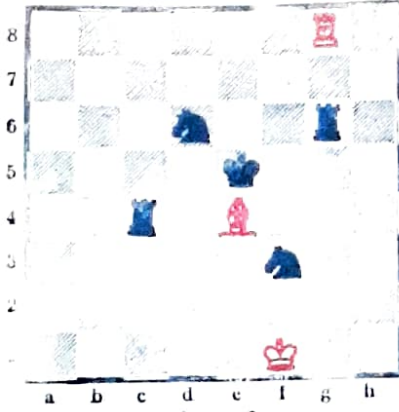
8) Hels. shakkiklubin Turn 1936



3 #

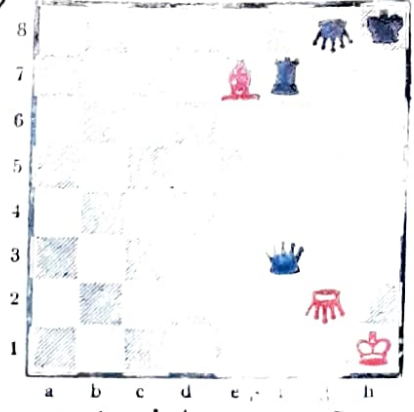
Ratk. 1) Th1 uhkaa T x h5 j, Th6 #
2) - Ta5, Re7 - Tg5, Dh6 # 3) -
Th4, Rd6 - Tf4, T x h5 # jne

9/ "Ås Underrättelser" 1935.



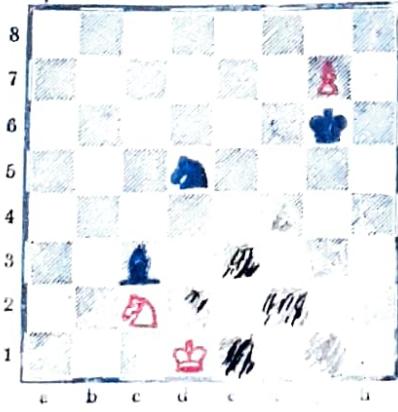
Apumatti: 3 #
 Ratk. - Rd4, Lh1-Te6, Tg2-Kd5,
 Tg5 #

10/ "Suomen Shakti" 1935.



Heinäsiirikka apumatti: 3 #
 Ratk. - Da8, Lh8-Tb7, Kxa8-
 Th7, Lh6 #

11/ "Turun Sanomat" 1934.



Spitze-matti: 3 #
 Ratk. 1/ g8T-Lg7, Te8-Lh6,
 Te1-Rc3 #

